

ABOUT US

We are Rainbow Lighting Solutions, a partnership firm based at Mumbai, Maharashtra. Handling our business operations since the year of establishment in 2015 in our registered brand name "FIRELLUX". We are manufacturers and importers of LED lightings delivering a high and medium range of lighting products in the domestic markets. We, FIRELLUX, are well known manufacturers for COB Spot lights , Modular Spot lights, Track Lights, Laser Blades, Down Lights, Zoom Spots, Highbay, Lowbay, Flood Lights, Street Lights, Bollards and Wall Grazers.

With an immense hands on experience of 6 years in the lighting market with extremely efficient team, we have constantly undergone development and expansion to give better Lighting experience to customers. With our effective team work and management, we manufacture lighting products with modernized technology and maintain norms to produce a robust, long lasting and premium lighting products at our facility.

Our lights are well appreciated for their bright illumination, longer burning life, eco-friendly, easy install and energy efficient. Hence, we have penetrated the lighting market and made stable clients with excellent products, reasonable pricing and trust building .

Our Vision is to grow as a top class manufacturing facility with the very best in cutting-edge solution. With the technical know how, innovative products and excellent skills we will strive hard every single day to produce and innovate the best case LED lighting products for our customers to take utmost care of their lighting need and its absolute fulfillment to core satisfaction.



10MM MAGNETIC TRACK LIGHT SERIES

Colors Available



MODEL
10 MM MAGNETIC TRACK

Surface

Recessed

Length	Fixture size	Body color	Type
2 mtr	W55xL2000xH43mm	Black	Conceal
2 mtr	W21xL2000xH43mm	Black	Surface

IP 20

MODEL
10 MM LINEAR LIGHT

Power	Fixture size	Body color	Type
10W	L200Wx10xH37mm	Black	BLE / DIP Switch
20W	L400Wx10xH37mm	Black	BLE / DIP Switch

IP 20

MODEL
10 MM TRACK SPOT

Power	Fixture size	Body color	Type
6W	Ø33xL85mm	Black	BLE / DIP Switch
12W	Ø43xL110mm	Black	BLE / DIP Switch

IP 20

MODEL
10 MM LASER SPOT

Power	Fixture size	Body color	Type
12W	L200Wx10xH37mm	Black	BLE / DIP Switch
20W	L400Wx10xH37mm	Black	BLE / DIP Switch

IP 20

MODEL
10 MM LASER TRACK

Power	Fixture size	Body color	Type
12W	L200xW10xH73mm	Black	BLE / DIP Switch

IP 20

MODEL
10 MM INPUT, CORNER, STRAIGHT MODULE

Straight Module

Input Module

Corner Module

Module	Fixture size	Body color	Type
INPUT	L50xW10xH37mm	Black	Load Input
STRAIGHT	L120xW10xH37mm	Black	Connector
CORNER	L250xW10xH37mm	Black	Connector

IP 20

MODEL
10MM HORIZONTAL CONNECTOR

Conceal "L"

Surface "L"

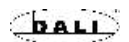
Connector	Fixture size	Body color	Type
Conceal "L"	100x100mm	Black	Conceal
Surface "L"	80x80mm	Black	Surface

IP 20

MODEL
10 MM INBUILT DRIVER

Power	Size	Driver Specifications	Body color	Type
100W	200Lx10WxH37	48V 2.1A 100W	Black	Integrated
200W	250Lx10WxH37	48V 4.2A 200W	Black	Integrated

IP 20



- DALI Now Available
- DIP SWITCH
- DT-8 3CCT
- BLE+RF
- Zigbee

• Tunable Color changing and dimming options available

1010 24V CABINET MAGNETIC TRACK LIGHT SERIES

Colors Available



MODEL
CABINET MAGNETIC TRACK

Surface Recessed

Length	Fixture size	Body color	Type
2 mtr	W13xL2000xH10mm	Black	Conceal
2 mtr	W12xL2000xH10mm	Black	Surface

IP 20

MODEL
CABINET LINEAR LIGHT

Power	Fixture size	Body color	Type
2W	L220xW8xH8mm	Black	3000K / 4000K
4W	L400xW8xH8mm	Black	3000K / 4000K

IP 20

MODEL
CABINET TRACK SPOT

Power	Fixture size	Shape	Body color	Type
2W	Ø18x40mm	Cylinder	Black	3000K / 4000K
2W	Ø28mm	Apple	Black	3000K / 4000K

IP 20

MODEL
CABINET LASER SPOT

Power	Fixture size	Body color	CCT
2W	L112xW8xH8mm	Black	3000K / 4000K
4W	L220xW8xH8mm	Black	3000K / 4000K
6W	L328xW8xH8mm	Black	3000K / 4000K

IP 20

MODEL
CABINET LASER TRACK

Power	Fixture size	Body color	Type
2W	L112xW8xH12mm	Black	3000K / 4000K
4W	L220xW8xH12mm	Black	3000K / 4000K

IP 20

MODEL
INPUT, CORNER, STRAIGHT MODULE

Straight Module Input Module

Corner Module

Module	Fixture size	Body color	Type
INPUT	L40xW10xH8mm	Black	Load Input
STRAIGHT	L80xW8xH8mm	Black	Connector
CORNER	L100xW8xH8mm	Black	Connector

IP 20



• Tunable Color changing and dimming options available

25MM MAGNETIC TRACK LIGHT SERIES

Colors Available



RECESSED MAGNETIC TRACK

Length	Size	Dimension
1 mtr	25mm	70xH53.6xL1000mm
2 mtr	25mm	70xH53.6xL2000mm

IP 20

SURFACE MAGNETIC TRACK

Length	Size	Dimension
1 mtr	25mm	28xH54x1000mm
2 mtr	25mm	28xH54x2000mm

IP 20

MODEL TRACK SPOT

Power	Fixture size
12W	φ 40X120mm
18W	φ 55X120mm

IP 20

MODEL LASER SPOT

Power	Fixture size
6W	112x22xH43mm
12W	220x22xH43mm
18W	328x22xH43mm
24W	436x22xH43mm

IP 20

MODEL LASER TRACK

Power	Fixture size
12W	231x22xH70mm

IP 20

- DALI**
- DALI Now Available
 - DT-6 Single Colour
 - DT-8 3CCT
 - BLE+RF
 - Zigbee

MODEL LINEAR LIGHT

Power	Fixture size
12W	300x22xH43mm
20W	600x22xH43mm
40W	1200x22xH43mm

IP 20

MODEL TRACK CONNECTOR

Connector Type	Fixture size
Horizontal L Type	120x52.5mm
Vertical L Type	120x52.5mm

IP 20

MODEL CONNECTOR MODULE

Module Type	Fixture size
Input Module	17x18x16mm
Straight Module	144x18x16mm
Corner Module	144x18x16mm

IP 20

MODEL DALI UNIVERSAL DABBI

20mm Universal Magnetic Adapter with 4 Dots

Power	Fixture size
6-25W	183x20xH15mm

IP 20

MODEL 25 MM INBUILT DRIVER

Power	Driver Specifications	Body color	Type
100W	48V 2.1A 100W	Black / White	Surface
200W	48V 4.2A 200W	Black / White	Surface

IP 20



● Tunable Color changing and dimming options available

5MM SURFACE MAGNETIC TRACK LIGHT SERIES

Colors Available



MODEL
5 MM
MAGNETIC
TRACK



Length	Fixture size	Body color	Type
1 mtr	W25xL1000xH7mm	Black / White	Surface
2 mtr	W25xL2000xH7mm	Black / White	Surface

MODEL
5 MM
LINEAR
LIGHT



Power	Fixture size	Body color	Type
10W	L251xW25xH25mm	Black / White	BLE Tunable
20W	L501xW25xH25mm	Black / White	BLE Tunable

MODEL
5 MM
TRACK
SPOT



Power	Fixture size	Body color	Type
12W	Ø45x100mm	Black / White	BLE Tunable

MODEL
5 MM
LASER
SPOT



Power	Fixture size	Body color	Type
12W	L251xW25xH25mm	Black / White	BLE Tunable
18W	L376xW25xH25mm	Black / White	BLE Tunable

MODEL
5 MM
LASER
TRACK



Power	Fixture size	Body color	Type
12W	L251xW25xH70mm	Black / White	BLE Tunable

MODEL
5 MM
INPUT
MODULE



Module	Fixture size	Body color	Type
INPUT	L60xW25xH17mm	Black / White	Surface

MODEL
5MM
STRAIGHT &
CORNER
CONNECTOR



Connector	Fixture size	Body color	Type
Straight	L57xW25xH7mm	Black / White	Surface
Corner	L40xW40xH7mm	Black / White	Surface

MODEL
5 MM
INBUILT
DRIVER



Power	Driver Specifications	Body color	Type
100W	48V 2.1A 100W	Black / White	Surface
200W	48V 4.2A 200W	Black / White	Surface



• Tunable Color changing and dimming options available

PREMIUM SPOT LIGHT SERIES

MODEL
ECCENTRIC
WALL
WASHER
SPOT



6W

12W



Power	Fixture size	Cut-out Size	Body Color
6W	Ø35xH80mm	Ø30mm	White + Chrome
12W	Ø61xH97mm	Ø55mm	White + Chrome



MODEL
PINOCCHIO
TRIMLESS
SPOT



Power	Fixture size	Cut-out Size	Body Color
10/12W	Ø125xH68mm	Ø105mm	White



MODEL
PETRONAS
DUAL
SPOT



Power	Fixture size	Cut-out Size	Body Color
2x7W	Ø83xH103mm	Ø75mm	White+Black



MODEL
PINHOLE
LASER
SPOT



CREE ⇄ **PHILIPS FULHAM**

Power	Fixture size	Cutout size	Body Color	3535 LED
15W	162x40xH43mm	156x35mm	White	5 LED
30W	312x40xH43mm	306x35mm	White	10 LED



MODEL
RADIUS
SLIM
SPOT



CREE ⇄ **PHILIPS FULHAM**

Power	Fixture size	Cutout size	Reflector Color
7W	Ø40xH66mm	Ø35mm	White / Shiny Black
12W	Ø50xH80mm	Ø45mm	White / Shiny Black
18W	Ø60xH90mm	Ø55mm	White / Shiny Black



- Housing / SKD also available
- Tunable Color changing and dimming options available

PREMIUM SPOT LIGHT SERIES

MODEL
DOUBLE
CABINET
LIGHT



Power	Fixture size	Lamp Size	Body Color
2x1W	Ø10xH175mm	Ø35mm	Black



MODEL
TRIPLE
CABINET
LIGHT



Power	Fixture size	Lamp Size	Body Color
3x1W	Ø10xH300mm	Ø35mm	Black



MODEL
JEWELRY
STREET
LAMP



Power	Fixture size	Lamp Size	Body Color
3x1W	Ø5xH200mm	60x30mm	Black



MODEL
LASER
WALL
WASHER



CREE ⇄ PHILIPS FULHAM

Power	Fixture size	Cutout size	Body Color	Reflector Color
12/15W	193x65xH49mm	175X50mm	White	Black+HoneyComb



MODEL
DIAMOND
SPOT



CREE ⇄ PHILIPS FULHAM

Power	Fixture size	Cutout size	Body Color	Reflector Color
7W	Ø52xH70mm	Ø45mm	White	White
12W	Ø62xH80mm	Ø55mm	White	White
18W	Ø72xH90mm	Ø75mm	White	White



- Housing / SKD also available
- Tunable Color changing and dimming options available

PREMIUM SPOT LIGHT SERIES

MODEL
GRAMMY
SPOT



CREE ⇄ PHILIPS **FULHAM**



Power	Fixture size	Cutout size	Body Color
7W	Ø61xH62mm	Ø55mm	White/Black
12W	Ø81xH78mm	Ø75mm	White/Black
18W	Ø101xH90mm	Ø95mm	White/Black

MODEL
GOLDI
LOCK
SPOT



CREE ⇄ PHILIPS **FULHAM**



Power	Fixture size	Cutout size	Reflector Color
7W	Ø43xH81mm	Ø35mm	White / Shiny Black
12W	Ø63xH96mm	Ø55mm	White / Shiny Black
18W	Ø82xH98mm	Ø75mm	White / Shiny Black

MODEL
GR
SPOT



CREE ⇄ PHILIPS **FULHAM**



Power	Fixture size	Cutout size	Body Color
20W	Ø105xH65mm	Ø95mm	White
30W	Ø132xH75mm	Ø115mm	White
40W	Ø150xH80mm	Ø135mm	White

NEW

MODEL
SLIMO
SPOT



CREE ⇄ PHILIPS **FULHAM**



Power	Fixture size	Cutout size	Body Color	Reflector Color
7W	Ø42xH84mm	Ø35mm	White/Black	White/S.Black
12W	Ø57xH98mm	Ø45mm	White/Black	White/S.Black
18W	Ø65xH103mm	Ø55mm	White/Black	White/S.Black
22W	Ø75xH110mm	Ø65mm	White/Black	White/S.Black

NEW

MODEL
TRIMLESS
SLIMO
SPOT



CREE ⇄ PHILIPS **FULHAM**



Power	Fixture size	Cutout size	Body Color	Reflector Color
7W	Ø60xH87mm	Ø35mm	White/Black	White/S.Black
12W	Ø70xH101mm	Ø45mm	White/Black	White/S.Black
18W	Ø80xH106mm	Ø55mm	White/Black	White/S.Black
22W	Ø90xH110mm	Ø65mm	White/Black	White/S.Black

NEW



- Housing / SKD also available
- Tunable Color changing and dimming options available

PREMIUM SPOT LIGHT SERIES

MODEL
EUPHORIA
SPOT



CREE ⇄
PHILIPS FULHAM



Power	Fixture size	Cutout size	Reflector Color
7W	Ø65xH78mm	Ø55mm	White/GunBlack
12W	Ø82xH96mm	Ø75mm	White/GunBlack
18W	Ø82xH108mm	Ø75mm	White/GunBlack

MODEL
TRIMLESS
EUPHORIA
SPOT



CREE ⇄
PHILIPS FULHAM



Power	Fixture size	Cutout size	Reflector Color
7W	Ø95xH80mm	Ø55mm	White / GunBlack
12W	Ø112xH98mm	Ø75mm	White / GunBlack
18W	Ø112xH110mm	Ø75mm	White / GunBlack

MODEL
MEZZO
SPOT



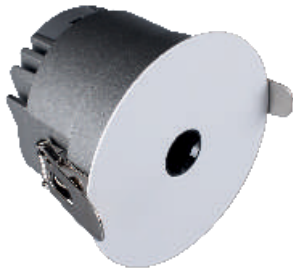
CREE ⇄
PHILIPS FULHAM



Power	Fixture size	Cutout size	Body Color	Beam Angle
12W	Ø120xH103mm	Ø70mm	White	36D / 15D



MODEL
PINHOLE
SPOT



CREE ⇄
PHILIPS FULHAM



Power	Fixture size	Cutout size	Body Color	Optics
10W	Ø85xH59mm	Ø75mm	White/Black	Shinland 36D

MODEL
PINHOLE
SURFACE
DRUM



CREE ⇄
PHILIPS FULHAM



Power	Fixture size	Body Color	Optics
7W	Ø75xH83mm	White/Black	Shinland 36D



- Housing / SKD also available
- Tunable Color changing and dimming options available

PREMIUM SPOT LIGHT SERIES

MODEL
ULTRA
SLIM
LASER



CREE ⇄ PHILIPS FULHAM

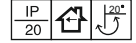


Power	Fixture size	Cutout size	Body Color	Reflector Color
7W	126x21xH26mm	122x15mm	White/Black	Shiny Black
12W	240x21xH26mm	236x15mm	White/Black	Shiny Black
18W	354X21XH26mm	350x15mm	White/Black	Shiny Black

MODEL
BREEZA
TILTABLE
SPOT



CREE ⇄ PHILIPS FULHAM



Power	Fixture size	Cutout size	Body Color	Beam Angle
3W	Ø48xH45mm	Ø40mm	Black	5D / 8D

MODEL
PINKY
SPOT



CREE ⇄ PHILIPS FULHAM



Power	Fixture size	Cutout size	Body Color
2W	Ø30xH40mm	Ø25mm	White/Black



MODEL
PRODIGY
PRO
RGB+CCT



CREE ⇄ PHILIPS FULHAM



Power	Fixture size	Cutout size	RGB + CCT	Reflector
12W	Ø85xH95mm	Ø75mm	RGB + CCT	WH / BK

MODEL
FLORA
SPOT



CREE ⇄ PHILIPS FULHAM



Power	Fixture size	Cutout size	Body Color	
3W	Ø41xH47mm	Ø35mm	White/Shiny Black	White
7W	Ø63xH48mm	Ø55mm	White/Shiny Black	White
12W	Ø84xH60mm	Ø75mm	White/Shiny Black	White
18W	Ø105xH70mm	Ø90mm	White/Shiny Black	White



- Housing / SKD also available
- Tunable Color changing and dimming options available

PREMIUM SPOT LIGHT SERIES

MODEL
GLOSSY
SPOT



CREE ⇄ **PHILIPS** **FULHAM**



Power	Fixture size	Cutout size	Body Color	Reflector Color
7W	Ø68xH50mm	Ø55mm	White/Black	WH / BK / RG
12W	Ø83xH63mm	Ø75mm	White/Black	WH / BK / RG
18W	Ø97xH71mm	Ø90mm	White/Black	WH / BK / RG
25W	Ø130xH71mm	Ø115mm	White/Black	WH / BK



MODEL
EXPERIA
DOUBLE
SPOT



CREE ⇄ **PHILIPS** **FULHAM**



Power	Fixture size	Cutout size	Body Color	Reflector Color
2x7W	134x70xH50mm	120x55mm	White/Black	WH / BK / RG
2x12W	169x85xH62mm	155x75mm	White/Black	WH / BK / RG

MODEL
AURA
SPOT



CREE ⇄ **PHILIPS** **FULHAM**



Power	Fixture size	Cutout size	Body Color
7W	Ø60xH42mm	Ø60mm	White/Black
12W	Ø80xH50mm	Ø75mm	White/Black
18W	Ø100xH62mm	Ø95mm	White/Black

MODEL
SLIM
JENGA



CREE ⇄ **PHILIPS** **FULHAM**



Power	Type	Fixture size	Cutout size	Body Color
9/12W	SPOT	Ø63xH66mm	Ø52mm	White+Black
9/12W	PINHOLE	Ø63xH66mm	Ø52mm	White+Black
18W	SPOT	Ø74xH90mm	Ø65mm	White+Black

MODEL
TRIMLESS
SLIM
JENGA



CREE ⇄ **PHILIPS** **FULHAM**



Power	Type	Fixture size	Cutout size	Body Color
9/12W	SPOT	Ø78xH66mm	Ø52mm	White+Black
9/12W	PINHOLE	Ø78xH66mm	Ø52mm	White+Black
18W	SPOT	Ø10xH90mm	Ø65mm	White+Black



- Housing / SKD also available
- Tunable Color changing and dimming options available

PREMIUM SPOT LIGHT SERIES

MODEL
GLOW
WALL
GRAZER



CREE ⇄
PHILIPS FULHAM



Power	Fixture size	Cutout size	Body Color	Reflector Color
12/15W	Ø85xH70mm	Ø75mm	White	Chrome
18/20WW	Ø108xH85mm	Ø95mm	White	Chrome

MODEL
GR
SURFACE
DRUM



CREE ⇄
PHILIPS FULHAM



Power	Fixture size	Body Color
12W	72XH75mm	White/Black
18W	90xH90mm	White/Black
25W	110xH110mm	White/Black

NEW

MODEL
IP 65
SURFACE
CYLINDER



IP 65

CREE ⇄
PHILIPS FULHAM



Power	Fixture size	Body Color
12W	Ø75xH100mm	Black + Black
18W	Ø95xH100mm	Black + Black
25W	Ø115xH152mm	Black + Black

NEW

MODEL
CELLO
SPOT
DRUM



CREE ⇄
PHILIPS FULHAM



Power	Type	Fixture size	Body Color	Reflector Color
12W	SPOT	Ø85xH75mm	White/Black	White/Black
20W	SPOT	Ø115xH95mm	White/Black	White/Black

MODEL
CELLO
DIFFUSED
DRUM



CREE ⇄
PHILIPS FULHAM

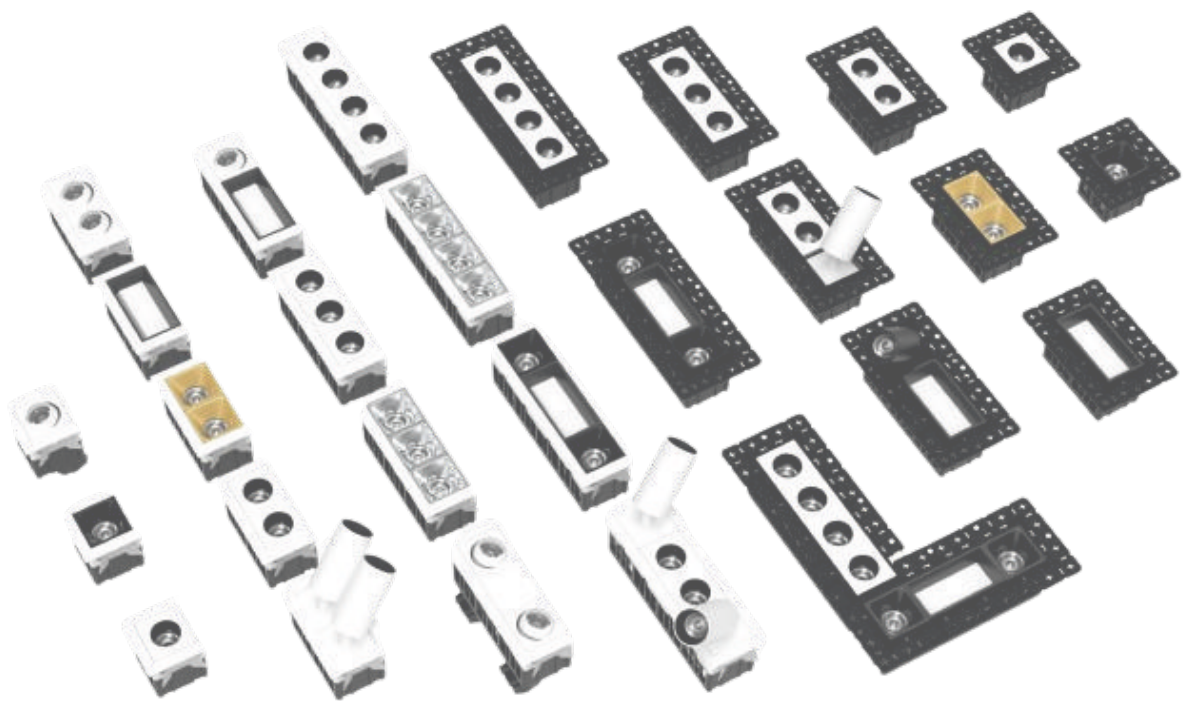


Power	Type	Fixture size	Body Color
12W	DIFFUSED	Ø85xH75mm	White / Black
20W	DIFFUSED	Ø115xH95mm	White / Black



- Housing / SKD also available
- Tunable Color changing and dimming options available

CLIQ MODULAR SPOT LIGHT SERIES



FIRELUX[®]

CLIQ MODULAR SPOT LIGHT SERIES

MODEL
CLIQ
TRIM
FRAMES



Frame Nodes	Fixture size	Cutout size	Body Color
Single Frame	56x56xH52mm	48X48mm	White/Black
Twin Frame	56X95xH52mm	48X88mm	White/Black
Triple Frame	56X132xH52mm	48X125mm	White/Black
Quad Frame	56X170xH52mm	48X162mm	White/Black

MODEL
CLIQ
TRIMLESS
FRAMES



Frame Nodes	Fixture size	Cutout size	Body Color
Single Frame	80x80xH52mm	52X52mm	White
Twin Frame	80X120xH52mm	52X90mm	White
Triple Frame	80X158xH52mm	52X128mm	White
Quad Frame	80X195xH52mm	52X165mm	White

MODEL
CLIQ
BLANK
MODULE



Power	Fixture size	Body Color
7W	37.5x37.5xH42.5mm	White/Black

MODEL
CLIQ
EYEBALL
SPOT



CREE ⇄ **PHILIPS FULHAM**

Power	Fixture size	Body Color	Reflector Color
7W	37.5x37.5xH60mm	White	White

MODEL
CLIQ
BAMBOO
SPOT



CREE ⇄ **PHILIPS FULHAM**

Power	Fixture size	Body Color	Reflector Color
7W	37.5x37.5xH60mm	White/Black	White/Black



• Tunable Color changing and dimming options available

CLIQ MODULAR SPOT LIGHT SERIES

MODEL
CLIQ
SINGLE
LASER



CREE ⇄ PHILIPS FULHAM



Power	Fixture size	Body Color	Reflector Color
7W	37.5x37.5xH60mm	Black	Shiny Black

MODEL
CLIQ
TWIN
LASER



CREE ⇄ PHILIPS FULHAM



Power	Fixture size	Body Color	Reflector Color
2x7W	37.5x75xH60mm	Black	Shiny Black

MODEL
CLIQ
LINEAR

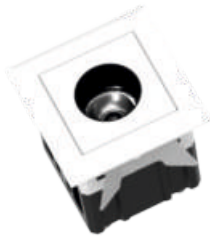


CREE ⇄ PHILIPS FULHAM



Power	Fixture size	Body Color
12W	37.5x75xH60mm	White/Black

MODEL
CLIQ
SINGLE
LASER
NEO



CREE ⇄ PHILIPS FULHAM



Power	Fixture size	Body Color	Reflector Color
7W	37.5x37.5xH60mm	White / Black	black

MODEL
CLIQ
TWIN
LASER
NEO



CREE ⇄ PHILIPS FULHAM



Power	Fixture size	Body Color	Reflector Color
2x7W	37.5x75xH60mm	White/Black	Black



• Tunable Color changing and dimming options available

COB SPOT LIGHT SERIES

MODEL
PRODIGY
SPOT

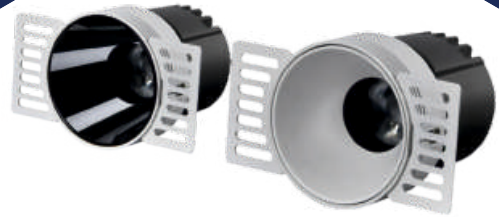


CREE ⇄
PHILIPS *FULHAM*



Power	Fixture size	Cutout size	Body Color
7W	Ø65xH80mm	Ø55mm	White/Shiny Black
12W	Ø85xH85mm	Ø75mm	White/Shiny Black
18W	Ø110xH118mm	Ø95mm	White/Shiny Black
12W SQ	168x89xH95mm	160x75mm	White/Shiny Black
2x12W	88x88xH95mm	80x80mm	White/Shiny Black

MODEL
PRODIGY
TRIMLESS
SPOT



CREE ⇄
PHILIPS *FULHAM*



Power	Fixture size	Cutout size	Reflector Color
7W	Ø82xH80mm	Ø55mm	White/Shiny Black
12W	Ø100xH85mm	Ø75mm	White/Shiny Black
18W	Ø131xH118mm	Ø95mm	White/Shiny Black

MODEL
PINHOLE /
OVAL CUT
PRODIGY
SPOT



CREE ⇄
PHILIPS *FULHAM*



Power	Fixture size	Cutout size	TYPE	Reflector
12W	Ø85xH95mm	Ø75mm	PINHOLE	WH / BK
12W	Ø85xH95mm	Ø75mm	OVAL CUT	WH / BK

TRIMLESS ALSO AVAILABLE



MODEL
JENGA
SPOT



CREE ⇄
PHILIPS *FULHAM*



Power	Fixture size	Cutout size	Reflector Color	Body Color
7-9W	Ø65xH75mm	Ø55mm	White/Shiny Black	White
12-15W	Ø85xH81mm	Ø75mm	White/Shiny Black	White
18-20W	Ø105xH95mm	Ø95mm	White/Shiny Black	White

MODEL
TRIMLESS
JENGA
SPOT



CREE ⇄
PHILIPS *FULHAM*



Power	Fixture size	Cutout size	Reflector Color	Body Color
7-9W	Ø95xH75mm	Ø55mm	White/Shiny Black	White
12-15W	Ø115xH81mm	Ø75mm	White/Shiny Black	White
18-20W	Ø135xH95mm	Ø95mm	White/Shiny Black	White



- Housing / SKD also available
- Tunable Color changing and dimming options available

POLO PREMIUM SPOT LIGHT SERIES

MODEL
POLO
SPOT



CREE ⇄ PHILIPS
Shinland
FULHAM



Power	Fixture size	Cutout size	Body Color
12W	Ø85xH57mm	Ø75mm	White/Black
2X12W	160x85xH58mm	148x75mm	White/Black

MODEL
POLO
GIMBAL



CREE ⇄ PHILIPS
Shinland
FULHAM



Power	Fixture size	Cutout size	Body Color
12W	Ø85xH70mm	Ø75mm	White/Black

MODEL
POLO
FROST



CREE ⇄ PHILIPS
Shinland
FULHAM



Power	Fixture size	Cutout size	Body Color
12W	Ø85xH73mm	Ø75mm	White/Black

MODEL
POLO
PINHOLE



CREE ⇄ PHILIPS
Shinland
FULHAM



Power	Fixture size	Cutout size	Body Color
12W	Ø85xH57mm	Ø75mm	White/Black

MODEL
POLO
PRO



CREE ⇄ PHILIPS
Shinland
FULHAM



Power	Fixture size	Cutout size	Body Color
12W	Ø85xH73mm	Ø75mm	White/Black



- Housing / SKD also available
- Tunable Color changing and dimming options available

COB SPOT LIGHT SERIES

MODEL
LASER
NEO



CREE ⇄
PHILIPS **FULHAM**



Power	Fixture size	Cutout size	Body Color	Reflector Color
4W	68x45xH32mm	58x37mm	White/Black	Black
10W	148x45xH32mm	139x37mm	White/Black	Black
20W	282x45xH32mm	272x37mm	White/Black	Black

MODEL
TILTABLE
LASER
NEO



CREE ⇄
PHILIPS **FULHAM**



Power	Fixture size	Cutout size	Body Color	Reflector Color
12W	167x65xH44mm	159x56mm	White	Black
20W	298x65xH44mm	290x56mm	White	Black



MODEL
EXTRA
DEEP
SPOT

CREE ⇄
PHILIPS **FULHAM**



Power	Fixture size	Cutout size	Body Color
7W	Ø55xH95mm	Ø50mm	White
12W	Ø75xH100mm	Ø70mm	White
18W	Ø90xH125mm	Ø80mm	White

MODEL
STELLA
SPOT



CREE ⇄
PHILIPS **FULHAM**



Power	Fixture size	Cut-out size	Body Color	Anti Glare Reflector
7W	Ø62xH89mm	Ø55mm	White/Black	S.BK / WH / RG / CH
12/15W	Ø82xH96mm	Ø75mm	White/Black	S.BK / WH / RG / CH
18W	Ø105xH119mm	Ø95mm	White/Black	S.BK / WH / RG / CH

- Modular Antiglare Moveable Spot Light
- Anti Glare Colored Metallic Reflector Options
- Downlight cum Wallwasher
- 20 degree Tiltable

MODEL
STELLA
TRIMLESS
SPOT



CREE ⇄
PHILIPS **FULHAM**



Power	Fixture size	Cut-out size	Body Color	Anti Glare Reflector
7W	Ø70xH80mm	Ø55mm	White/Black	S.BK / WH / RG / CH
12/15W	Ø95xH96mm	Ø75mm	White/Black	S.BK / WH / RG / CH
18W	Ø120xH119mm	Ø95mm	White/Black	S.BK / WH / RG / CH

- Modular Antiglare Moveable Spot Light
- Anti Glare Colored Metallic Reflector Options
- Downlight cum Wallwasher
- 20 degree Tiltable



- Housing / SKD also available
- Tunable Color changing and dimming options available

DELTA PLUS MODULAR COB SPOT LIGHT

MODEL
DELTA PLUS



CREE ⇄ **PHILIPS** **GROOPTICS**
FULHAM



Power	Fixture size	Cut-out size	Body Color	Anti Glare Reflector
7W	Ø65xH70mm	Ø55mm	White/Black	Shiny Black/RoseGold/White/Chrome
12/15W	Ø85xH85mm	Ø75mm	White/Black	Shiny Black/RoseGold/White/Chrome
18W	Ø85xH100mm	Ø75mm	White/Black	Shiny Black/RoseGold/White/Chrome
24W	Ø110xH87mm	Ø95mm	White/Black	Shiny Black/RoseGold/White/Chrome

- Modular Antiglare Moveable Spot Light
- Anti Glare Colored Metallic Reflector Options
- Downlight cum Wallwasher
- 20 degree Tiltable



MODEL
TRIMLESS DELTA PLUS



CREE ⇄ **PHILIPS** **GROOPTICS**
FULHAM



Power	Fixture size	Cut-out size	Body Color	Anti Glare Reflector
7W	Ø65xH70mm	Ø55mm	White/Black	Shiny Black/RoseGold/White/Chrome
12/15W	Ø85xH85mm	Ø75mm	White/Black	Shiny Black/RoseGold/White/Chrome
18W	Ø85xH100mm	Ø75mm	White/Black	Shiny Black/RoseGold/White/Chrome

- Modular Antiglare Moveable Spot Light
- Anti Glare Colored Metallic Reflector Options
- Downlight cum Wallwasher
- 30 degree Tiltable

MODEL
PINHOLE/ OVAL CUT



CREE ⇄ **PHILIPS** **GROOPTICS**
FULHAM



Power	Fixture size	Cut-out size	Body Color	Anti Glare Reflector
12/15W	Ø85xH85mm	Ø75mm	White/Black	Pinhole / Oval Cut
18W	Ø85xH100mm	Ø75mm	White/Black	Pinhole / Oval Cut

- Modular Antiglare Moveable Spot Light
- Anti Glare Colored Metallic Reflector Options
- Downlight cum Wallwasher
- 30 degree Tiltable

MODEL
TWIN DELTA PLUS CONCEAL



CREE ⇄ **PHILIPS** **GROOPTICS**
FULHAM



Power	Fitting Type	Fixture size	Cut-out size	Anti Glare Reflector
12/15Wx2	CONCEAL	168x88xH85	160x75mm	Shiny Black/RoseGold/White/Chrome
18Wx2	CONCEAL	168x88xH100	160x75mm	Shiny Black/RoseGold/White/Chrome

MODEL
TWIN DELTA PLUS SURFACE



CREE ⇄ **PHILIPS** **GROOPTICS**
FULHAM



Power	Fitting Type	Fixture size	Cut-out size	Anti Glare Reflector
12/15Wx2	SURFACE	202x108xH110	NA	Shiny Black/RoseGold/White/Chrome



- Housing / SKD also available
- Tunable Color changing and dimming options available

DELTA PLUS MODULAR COB SPOT LIGHT

MODEL
TRIPLE
DELTA PLUS
CONCEAL



CREE PHILIPS GROPTICS FULHAM



Power	Fitting Type	Fixture size	Cut-out size	Anti Glare Reflector
12/15Wx3	CONCEAL	247x88xH85	240x75mm	Shiny Black/RoseGold/White/Chrome
18Wx3	CONCEAL	247x88xH100	240x75mm	Shiny Black/RoseGold/White/Chrome

MODEL
TRIPLE
DELTA PLUS
SURFACE



CREE PHILIPS GROPTICS FULHAM



Power	Fitting Type	Fixture size	Cut-out size	Anti Glare Reflector
12/15Wx3	SURFACE	298x108xH110	NA	Shiny Black/RoseGold/White/Chrome

MODEL
QUAD
DELTA
PLUS



CREE PHILIPS GROPTICS FULHAM



Power	Fitting Type	Fixture size	Cut-out size	Anti Glare Reflector
12/15Wx4	CONCEAL	168x168xH85	160x160mm	Shiny Black/RoseGold/White/Chrome
18Wx4	CONCEAL	168x168xH100	160x160mm	Shiny Black/RoseGold/White/Chrome
12/15Wx4	SURFACE	202x202xH110	NA	Shiny Black/RoseGold/White/Chrome

MODEL
BUTTON
SPOT



MODEL
GLAZE
SPOT

CREE PHILIPS Shinland FULHAM



Power	Fixture size	Cut-out size	Body Color	Reflector
5W	Ø35xH90mm	Ø30mm	White	Shiny Black
10W	Ø44xH100mm	Ø40mm	White	Shiny Black



CREE PHILIPS



Power	Fixture size	Cutout size	Reflector Color
3W	Ø38xH30mm	Ø30mm	White / Black



- Housing / SKD also available
- Tunable Color changing and dimming options available

COB SPOT LIGHT SERIES

MODEL
FLATO
COB
SPOT



CREE ⇄ **PHILIPS** **GR OPTICS**
FULHAM



Power	Fixture size	Cutout	Reflector Color
12W	Ø85xH50mm	Ø75mm	White / Black
18W	Ø108xH65mm	Ø95mm	White / Black
30W	Ø130xH80mm	Ø115mm	White / Black

12W Flato Model available with LDR & Motion Sensor, with a 3 meter motion detection range along with dusk to dawn detection

MODEL
SENSOR
FLATO
SPOT



With Built-in
PIR & Dusk to Dawn
SENSOR

CREE ⇄ **PHILIPS** **GR OPTICS**
FULHAM



Power	Fixture size	Cutout	Reflector Color
12W	Ø85xH50mm	Ø75mm	White / Black

12W Flato Model available with LDR & Motion Sensor, with a 3 meter motion detection range along with dusk to dawn detection

MODEL
SURFACE
COB
SPOT



CREE ⇄ **PHILIPS** **GR OPTICS**
FULHAM



Power	Fixture size	Body Color	Reflector Color
7W	Ø55xH80mm	White / Black	Chrome, Black, Gold, RoseGold, White, Shiny Black
12W/15W	Ø75xH115mm	White / Black	
18W/20W	Ø75xH130mm	White / Black	
25W/30W	Ø100xH150mm	White / Black	

MODEL
TILTABLE
DRUM



CREE ⇄ **PHILIPS** **FULHAM**



Power	Fixture size	Body Color	Reflector Color
7W	Ø59xH77mm	White / Black	Shiny Black
12W	Ø73xH91mm	White / Black	Shiny Black
18W	Ø87xH106mm	White / Black	Shiny Black

MODEL
GLORIA
NX



CREE ⇄ **PHILIPS** **Shinland**
FULHAM



Power	Fixture size	Cut-out size	Body Color	Optics
7W	Ø63xH73mm	Ø55mm	WH + SB	Lens
12W	Ø86xH83mm	Ø75mm	WH + SB	Lens
20W	Ø106xH125mm	Ø95mm	WH + SB	Lens
35W	Ø132xH155mm	Ø120mm	WH + SB	Lens

- HIGH END Modular Spot light with changable Ring
- Anti Glare shiny black reflector
- 10,20,30 degree Tilttable
- UGR less than 16



- Housing / SKD also available
- Tunable Color changing and dimming options available

ASTORIA & SLIM BAMBOO SPOT SERIES



MODEL
ASTORIA
SPOT



CREE ⇄ PHILIPS **GR OPTICS**
FULHAM


Shinland
FULHAM

Power	Fixture size	Cutout size	Body Color
7W	Ø61xH79mm	Ø55mm	White
12/15W	Ø84xH100mm	Ø75mm	White
20W	Ø110xH122mm	Ø95mm	White

- HIGH END Modular Spot light with changable Ring
- Anti Glare shiny black reflector
- UGR less than 16
- 10,20,30 degree Tilttable



MODEL
SLIM
BAMBOO
ZOOM



CREE ⇄ PHILIPS **Shinland**
FULHAM

Shinland
FULHAM

Power	Fixture size	Cutout size	Body Color
7W	Ø62xH86mm	Ø58mm	White
12W	Ø84xH104mm	Ø75mm	White
20W	Ø110xH127mm	Ø95mm	White



MODEL
LILIPUT
SPOT



CREE ⇄

Power	Fixture size	Cutout size	Reflector Color
3W	Ø24xH65mm	Ø18mm	White / Black



MODEL
TRIMLESS
ASTORIA
SPOT



CREE ⇄ PHILIPS **GR OPTICS**
FULHAM

Shinland
FULHAM

Power	Fixture size	Cutout size	Body Color
7W	Ø61xH79mm	Ø55mm	White
12/15W	Ø84xH100mm	Ø75mm	White
20W	Ø110xH122mm	Ø95mm	White

- HIGH END Modular Spot light with changable Ring
- Anti Glare shiny black reflector
- UGR less than 16
- 10,20,30 degree Tilttable



MODEL
TRIMLESS
SLIM
BAMBOO



CREE ⇄ PHILIPS **Shinland**
FULHAM

Shinland
FULHAM

Power	Fixture size	Cutout size	Body Color
7W	Ø62xH86mm	Ø58mm	White
12W	Ø84xH104mm	Ø75mm	White
20W	Ø110xH127mm	Ø95mm	White



- Housing / SKD also available
- Tunable Color changing and dimming options available

ASTORIA & SLIM BAMBOO SPOT SERIES

MODEL
DOUBLE
ASTORIA
SPOT



CREE ⇄ PHILIPS
GR OPTICS
FULHAM



Power	Type	Fixture size	Cutout size	Body Color
7Wx2	TWIN	130x69xH85mm	121x60mm	White
12/15Wx2	TWIN	180x91xH100mm	164x77mm	White
20Wx2	TWIN	224x110xH139mm	209x97mm	White

MODEL
DOUBLE
TRIMLESS
ASTORIA



CREE ⇄ PHILIPS
GR OPTICS
FULHAM



Power	Fixture size	Cutout size	Body Color
7Wx2	130x69xH85mm	121x60mm	White
12/15Wx2	180x91xH100mm	164x77mm	White
20Wx2	224x110xH139mm	209x97mm	White

MODEL
GIANT
COB
SPOT



CREE ⇄ PHILIPS
GR OPTICS
FULHAM



Power	Fixture size	Cutout	Reflector Color
40W	Ø140xH152mm	Ø120mm	Black
50W	Ø160xH168mm	Ø140mm	Black

MODEL
DOUBLE
SLIM
BAMBOO



CREE ⇄ PHILIPS
Shinland
FULHAM



Power	Type	Fixture size	Cutout size	Body Color
7Wx2	TWIN	130x69xH91mm	121x60mm	White
12Wx2	TWIN	180x91xH116mm	164x77mm	White
20Wx2	TWIN	224x110xH142mm	209x97mm	White

MODEL
DOUBLE
TRIMLESS
SLIM
BAMBOO



CREE ⇄ PHILIPS
Shinland
FULHAM



Power	Fixture size	Cutout size	Body Color
7Wx2	130x69xH85mm	121x60mm	White
12/15Wx2	180x91xH100mm	164x77mm	White
20Wx2	224x110xH139mm	209x97mm	White



- Housing / SKD also available
- Tunable Color changing and dimming options available

DOWNLIGHT & SPOT SERIES

MODEL
SNOW SPOT




CREE ⇄ **PHILIPS** **DARKOO** **FULHAM**

Power	Fixture size	Cutout size	Body Color
35W	Ø109xH125mm	Ø95mm	White

IP 20   

NEW

MODEL
RIMLESS DOWN LIGHT



PHILIPS **bridgelux** **FULHAM**

Power	Fixture size	Cutout	Shape	Beam Angle
12W	120xH50mm	110mm	Round	110°
18W	155xH55mm	145mm	Round	110°
24W	175xH55mm	165mm	Round	110°

IP 20 

MODEL
ECO PLUS DOWNLIGHT



CREE ⇄ **PHILIPS** **FULHAM**

Power	Fixture size	Cutout size	Body Color
12W	Ø115xH48mm	Ø105mm	White / Black
18W	Ø145xH48mm	Ø135mm	White / Black

IP 20 

IP 65

MODEL
IP 65 JAL SPOT



CREE ⇄ **PHILIPS** **FULHAM**

Power	IP Level	Fixture size	Cutout size	Body	Reflector
10W	IP 65	Ø65xH70mm	Ø55mm	White/Black	White / Black
18W	IP 65	Ø85xH90mm	Ø75mm	White/Black	White / Black

IP 65 

NEW

MODEL
IP 65 JAL SURFACE CYLINDER



CREE ⇄ **PHILIPS** **FULHAM**

Power	IP Level	Fixture size	Body	Reflector
12W	IP 65	Ø55xH76mm	WH/BK	WH/BK
18W	IP 65	Ø75xH82mm	WH/BK	WH/BK

IP 65 

NEW



- Housing / SKD also available
- Tunable Color changing and dimming options available

TRACK, SPOT & DOWNLIGHT SERIES

MODEL
IP 65
SPLASH
SPOT



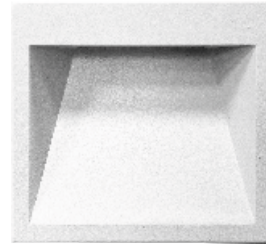
IP 65

CREE ⇄
PHILIPS *FULHAM*



Power	IP Level	Fixture size	Cutout size	Body	Reflector
12W	IP 65	Ø85xH55mm	Ø75mm	White	Shiny Black
20W	IP 65	Ø105x65mm	Ø95mm	White	Shiny Black
30W	IP 65	Ø130xH75mm	Ø115mm	White	Shiny Black

MODEL
EUREKA
FOOT
LIGHT



CREE ⇄
PHILIPS *FULHAM*

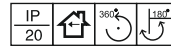


Power	Material	Fixture size	Body Color	Type	IP Level
3W	Aluminium	85x85mm	White	Conceal	IP 65



MODEL
LENS
TRACK

CREE ⇄
PHILIPS *DARKOO*
FULHAM



Power	Fixture size	Driver Casing	Body Color
10W	Ø50X100mm	80mm	White / Black
20W	Ø60x135mm	125mm	White / Black
30W	Ø80X150mm	165mm	White / Black

MODEL
DEEP
CONE



CREE ⇄
PHILIPS *Shinland*
FULHAM



Power	Fixture size	Cut-out size	Body Color
7W	Ø40xH55mm	Ø35mm	Full White, Full Black, Full Copper
12W	Ø60xH82mm	Ø55mm	Full White, Full Black, Full Copper, White + Black, White + Grey
18W	Ø80xH95mm	Ø75mm	Full White, Full Black, Full Copper, White + Black, White + Grey

MODEL
VALUE
SPOT



CREE ⇄
PHILIPS *Shinland*
FULHAM



Power	Fixture size	Cut-out size	Body Color
3W	Ø42xH40mm	Ø36mm	White / Black
7W	Ø70xH65mm	Ø60mm	White / Black
12/15W	Ø85xH75mm	Ø75mm	White / Black
18/20W	Ø95xH100mm	Ø85mm	White / Black



- Housing / SKD also available
- Tunable Color changing and dimming options available

MODULAR COB SPOT LIGHT SERIES

MODULES

7W / 9W 12W / 15W / 18W

Power	Fixture size
7W / 9W	φ 47x67mm
12W / 15W / 18W	φ 54x78mm

IP20, DALI, 4000K, 5000K, 6000K, CREE PHILIPS, SHINLEAD, FULHAM

MODEL LM

7W / 9W φ 85 x 50mm

12W / 15W / 18W φ 85 x 50mm

IP20, DALI, 4000K, 5000K, 6000K, CREE PHILIPS, SHINLEAD, FULHAM

MODEL BM

7W / 9W φ 95x90mm

12W / 15W / 18W φ 95x101mm

IP20, DALI, 4000K, 5000K, 6000K, CREE PHILIPS, SHINLEAD, FULHAM

MODEL GM

7W / 9W 80x80x93mm

12W / 15W / 18W 80x80x104mm

IP20, DALI, 4000K, 5000K, 6000K, CREE PHILIPS, SHINLEAD, FULHAM

MODEL FM

7W / 9W 85x85x113mm

12W / 15W / 18W 85x85x124mm

IP20, DALI, 4000K, 5000K, 6000K, CREE PHILIPS, SHINLEAD, FULHAM

MODEL SLOT-1

NEW

Power	Fixture Size	Color
7W / 9W	100X100X40mm	WH/BK
12W / 15W / 18W	100X100X40mm	WH/BK

IP20, DALI, 4000K, 5000K, 6000K, CREE PHILIPS, SHINLEAD, FULHAM

MODEL SLOT-2

NEW

Power	Fixture Size	Color
2x7W / 2x9W	185X100X40mm	WH/BK
2x12W / 2x15W / 2x18W	185X100X40mm	WH/BK

IP20, DALI, 4000K, 5000K, 6000K, CREE PHILIPS, SHINLEAD, FULHAM

MODEL SLOT-3

NEW

Power	Fixture Size	Color
3x7W / 3x9W	270X100X40mm	WH/BK
3x12W / 3x15W / 3x18W	270X100X40mm	WH/BK

IP20, DALI, 4000K, 5000K, 6000K, CREE PHILIPS, SHINLEAD, FULHAM

MODEL AG

7W / 9W φ 85x110mm

12W / 15W / 18W φ 85x125mm

IP20, DALI, 4000K, 5000K, 6000K, CREE PHILIPS, SHINLEAD, FULHAM

MODEL AGT

7W / 9W φ 78x110mm

12W / 15W / 18W φ 78x125mm

IP20, DALI, 4000K, 5000K, 6000K, CREE PHILIPS, SHINLEAD, FULHAM



MODEL GRILL-1

Power	Fixture size
1x7W / 1x9W	100x100x95mm
1x12W / 1x15W / 1x18W	100x100x106mm

IP20, DALI, 4000K, 5000K, 6000K, CREE PHILIPS, SHINLEAD, FULHAM

MODEL GRILL-2

Power	Fixture size
2x7W / 2x9W	190x100x95mm
2x12W / 2x15W / 2x18W	190x100x106mm

IP20, DALI, 4000K, 5000K, 6000K, CREE PHILIPS, SHINLEAD, FULHAM

MODEL GRILL-3

Power	Fixture size
3x7W / 3x9W	260X100X95mm
3x12W / 3x15W / 3x18W	260X100X106mm

IP20, DALI, 4000K, 5000K, 6000K, CREE PHILIPS, SHINLEAD, FULHAM

• Housing / SKD also available

• Tunable Color changing and dimming options available

OUTDOOR SPOT & WALL WASHER SERIES

MODEL XL WALL WASHER



24V DC



Constant Voltage	Fixture Length	Power	Beam Angle	Power Supply
24V Linkable	1 Meter	72W	5°/15°/25°	External

NEW

MODEL OUTDOOR WALL WASHER



Power	IP Level	Length	Beam Angle
18W	IP 65	0.5 Meter	15 / 30 / 10X60 Degree Lens
36W	IP 65	1 Meter	15 / 30 / 10X60 Degree Lens
24W	IP 65	2 Feet	15 / 30 / 10X60 Degree Lens
48W	IP 65	4 Feet	15 / 30 / 10X60 Degree Lens

• Potted Driver

MODEL 24V SLIM WALL WASHER



24V DC



Constant Voltage	Fixture Length	Power	Beam Angle	Power Supply
24V Linkable	1 Feet	12W	5°/15°/25°	External
24V Linkable	0.5 Meter	18W	5°/15°/25°	External
24V Linkable	1 Meter	36W	5°/15°/25°	External

MODEL RGB/RGBW SLIM WALL WASHER



24V DC



Color Temp.	Power	Fixture Length	Lens	Connection
RGB/RGBW	24V, 24W	0.5 Meter	25°	Addressable & Linkable
RGB/RGBW	24V, 48W	1 Meter	25°	Addressable & Linkable

Addressable, Programmable Segmented RGB / RGBW Wallwashers, External Power Supply

MODEL DMX CONTROLLER & DECODER



Single Port Controller



8 Port Controller



512 DMX Decoder



DMX Type	Port	Channels	Type
Controller	Single Port	4 Channel	Programmable
Controller	8 Port	32 Channel	Programmable
T-500Controller	Single Port	4 Channel	Pre-Programmed
Decoder	Single Port	512 Channel	Addresser

• Housing / SKD also available

OUTDOOR UPLIGHTER & HIGHLIGHTER SERIES



MODEL
PILLAR HIGH LIGHTER

IP 65

CREE ⇄ **PHILIPS**

Power	IP Level	Beam Angle	Color Temp.
08W/12W	IP 65	10 Degree	2.7K / 3K / 4K / 6K
18W	IP 65	10 Degree	2.7K / 3K / 4K / 6K

MODEL
BEAM HIGH LIGHTER



IP 65

Power	Type	Fixture size	Beam Angle	IP Level
20W	Round	Ø130x100x140mm	3°	IP 65
40W	Round	Ø180x115x215mm	3°	IP 65

MODEL
BUSH HIGH LIGHTER



4w 7w

CREE ⇄

IP 65

Power	Fixture size	Beam Angle	IP Level
4W/8W	65x75xH100mm	5°/15°/ 25°	IP 65
7W	55x66xH72mm	15°	IP 65

NEW

MODEL
FACADE HIGH LIGHTER



IP 65

Power	Fixture	Fixture size	Beam Angle	IP Level
24W	Square	135x135x180mm	5°/15°/30°	IP 65
24W	Round	Ø130x100x175mm	5°/15°/30°	IP 65
50W	Square	195x195x180mm	5°/15°/30°	IP 65
50W	Round	Ø190x190x175mm	5°/15°/30°	IP 65

• **RGBWW** •
DMX 512 AVAILABLE
24V DC

MODEL
HD FACADE LIGHTER



IP 65

Power	Fixture	Fixture size	LED	Beam Angle
72W	Rectangle	167x263x240mm	3535	5°/30°/60°
100W	Rectangle	205x315x290mm	3535	5°/30°/60°

• Housing / SKD also available

OUTDOOR POST TOP & GARDEN LIGHT SERIES

MODEL
ECO
FACADE
LIGHT



With CAP

Without CAP



Power	Type	Fixture size	Beam Angle	IP Level
24-36W	Round	Ø180x90x225mm	5°/15°/30°	IP 65
48-60W	Round	Ø230x100x280mm	5°/15°/30°	IP 65

MODEL
PRIMO
FACADE
LIGHT



CREE ⇄ **PHILIPS** **FULHAM**



Power	Fixture size	Base	Beam Angle	IP Level
24W	Ø110xH200mm	35mm	5°/15°/30°	IP 65

MODEL
INGROUND
BURIAL
LIGHT



CREE ⇄ **PHILIPS** **FULHAM**



Power	IP Level	Fixture size	Input Voltage	Body
3W	IP 65	Ø65xH80mm	24V DC	Aluminium + S. S.
6W	IP 65	Ø100xH80mm	24V DC	Aluminium + S. S.
12W	IP 65	Ø120xH90mm	24V DC	Aluminium + S. S.



MODEL
GALAXY
BOLLARD
LIGHT



Power	Material	Fixture Size	Beam Angle	IP Level
12W	Aluminium	Ø60xH600mm	120°	IP 65

MODEL
MARK
BOLLARD
LIGHT



Power	Material	Fixture Size	Beam Angle	IP Level
12W	Aluminium	Ø110xH600mm	120°	IP 65

• Housing / SKD also available

OUTDOOR POST TOP & GARDEN LIGHT SERIES

MODEL
PLUTO
GARDEN
POST LAMP



CREE ⇄ **PHILIPS** *FULHAM*

IP 65

Power	Fixture size	Base	Beam Angle	IP Level
30-60W	323x323x407mm	75mm	120°	IP 65



MODEL
BRUNO
GARDEN
POST LAMP



CREE ⇄ **PHILIPS** *FULHAM*

IP 65

Power	Fixture size	Base	Beam Angle	IP Level
50W	423x423x520mm	75mm	120°	IP 65



MODEL
POST
TOP
LAMP

CREE ⇄ **PHILIPS** *FULHAM*

IP 65

Power	Fixture	Fixture size	Base	IP Level
50-60W	Round	440x440x440mm	82mm	IP 65

MODEL
CNC
SPIKE
LIGHT



IP 65

Power	Fixture	Fixture size	Beam Angle	Feature
7W	Round	Ø42x135mm	24°	Hood
12W	Round	Ø50x160mm	24°	Hood
18W	Round	Ø58x165mm	24°	Hood



MODEL
GARDEN
SPIKE
LIGHT



CREE ⇄ **PHILIPS**

IP 65

Power	Fixture	Fixture size	Beam Angle	IP Level
7W	Round	Ø75mm	38°	IP 65
12W	Round	Ø95mm	38°	IP 65

• Housing / SKD also available

LED & COB STRIP LIGHT SERIES

MODEL
24V LOW
POWER
OSRAM
LED STRIP



Powered By
OSRAM
LED



Voltage	PCB Size	No. LED	Power	LED Make	CCT
24V	5mm	120/mtr	5W/mtr	OSRAM 2835	3K/4K
24V	8mm	180/mtr	10W/mtr	OSRAM 2835	3K/4K
24V	8mm	240/mtr	12W/mtr	OSRAM 2835	3K/4K

MODEL
24V ULTRA
THIN LED
STRIP



PCB Size: 3mm



Voltage	PCB Size	No. LED	Power	LED Pack	CCT
24V	3mm	168/mtr	8W/mtr	2025	3000K

MODEL
DMX
RGBWW
STRIP IP20



Voltage	PCB Size	No. LED	IC	TYPE	CCT
24V	12mm	60/mtr	SM/TM 512	DMX 512	RGBWW



MODEL
24V Ip67
RGBWW
DMX STRIP



Voltage	PCB Size	No. LED	IC	TYPE	IP	CCT
24V	12mm	60/mtr	Sm512	DMX 512	Ip67	RGBWW

MODEL
Ip67
DMX RGBWW
FLEXI
GRAZER



Voltage	Size	LENS+LED	Power	Beam Angle	CCT
24V	W20xH10mm	36/mtr	24W/mtr	10x30°	RGBWW

LED & COB STRIP LIGHT SERIES

MODEL
24V
LEDSTRIP
LIGHT



Voltage	PCB Size	No. LED	Power	LED Pack	CCT
24V	5mm	120/mtr	10W/mtr	2835	3K/4K/6K
24V	8mm	180/mtr	16W/mtr	2835	2.7K/3K/4K/6K
24V	5mm	180/mtr	12W/mtr	2025	3K/4K/6K
24V	8mm	240/mtr	18W/mtr	2835	3K/4K/6K
24V	5mm	240/mtr	15W/mtr	2025	3K/4K/6K

MODEL
24V IP65
WATER-
PROOF
LED STRIP



Voltage	PCB Size	No. LED	Power	LED Pack	CCT
24V	10mm	120/mtr	8W/mtr	2835	3000K
24V	10mm	180/mtr	12W/mtr	2835	3000K

MODEL
TUNABLE
STRIP
LIGHT



Voltage	PCB Size	No. LED	Power	LED Pack	CCT Tunable
24V	8mm	240/mtr	14W/mtr	2835	2700K-6500K
24V	8mm	240/mtr	14W/mtr	2835	1800K-4000K
24V	5mm	240/mtr	14W/mtr	2025	2700K-6500K

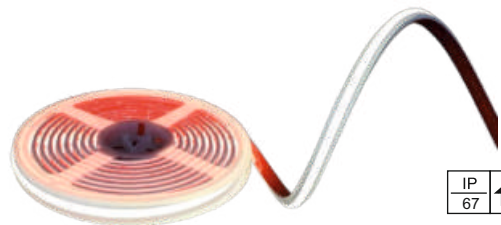


MODEL
24V COB
STRIP
LIGHT



Voltage	PCB Size	No. LED	Power	Package	CCT	IP
24V	8mm	320/mtr	18W/mtr	COB	3000K	IP 20

MODEL
24V IP67
SOB FLEX



Voltage	PCB Size	No. LED	Power	Package	CCT	IP
24V	10mm	240/mtr	10W/mtr	2835	2700K	IP 67
220V AC	10mm	240/mtr	10W/mtr	2835	2700K	IP 67

LED & COB STRIP LIGHT SERIES

MODEL
48V HIGH EFFICIENCY STRIPS



Voltage	PCB Size	No. LED	Power	LED Pack	CCT
24V	8MM	180/mtr	18W/mtr	2835	3K/4K



MODEL
IP 20 WALL GRAZER STRIP LIGHT



Voltage	Size	LENS+LED	Power	Beam Angle	CCT
24V	W14xH10mm	48/mtr	18W/mtr	10x30°	3000K
24V	W14xH10mm	48/mtr	18W/mtr	10x30°	2700K-6500K



MODEL
Ip65 WALL GRAZER LIGHT



Voltage	Size	LENS+LED	Power	Beam Angle	CCT
24V	W14xH10mm	42/mtr	16W/mtr	10x30°	3000K

MODEL
170° WIDE ANGLE STRIPS



Voltage	PCB Size	No. LED	Power	CCT	Beam Angle
24V	12mm	48/mtr	18W/mtr	3000K	170°
24V	12mm	48/mtr	18W/mtr	2700k-6500k	170°

MODEL
RGB RGBCCCT STRIPS



Voltage	PCB Size	No. LED	Power	CCT	LED Package
24V	8mm	120/mtr	12W/mtr	RGB	3535
24V	12mm	96/mtr	12W/mtr	RGBWWCW	5050

LED & COB STRIP LIGHT SERIES

MODEL
3D FLEX
SIDE & TOP
BENDABLE



Voltage	FLEX Size	No. LED	Power	LED Pack	CCT
24V	1010	120/mtr	10W/mtr	2835	3K/4K
24V	1212	180/mtr	15W/mtr	2835	3K/4K
24V	1616	180/mtr	15W/mtr	2835	3K/4K



MODEL
IP 67
WALL
WASHER
3D FLEX



Voltage	Size	LENS+LED	Power	Beam Angle	CCT
24V	2025	48/mtr	18W/mtr	10x30°	3000K



MODEL
STEEL
MESH FOR
FLEX



FLEX Size	Dimensions	Material	Roll Size
1010	W11xH10mm	Stainless Steel	100mtr
1212	W13xH9mm	Stainless Steel	100mtr
1616	W17xH10mm	Stainless Steel	100mtr
2010	W22xH10mm	Stainless Steel	50mtr
3025	W32xH17mm	Stainless Steel	50mtr
5025	W51xH18mm	Stainless Steel	50mtr



MODEL
FACADE
POLE
ARM



Material	Size	Type	Suitable For
Aluminium Die Cast	DIA80 H200mm	Adjustable	24W Facade
Aluminium Die Cast	DIA90 H200mm	Adjustable	48W Facade



MODEL
S. S.
HARNES
STRAP



Material	Size	Type	Mechanism
Stainless Steel	W14mm H1000mm	Adjustable	Nut Bolt Locking
Stainless Steel	W14mm H1800mm	Adjustable	Nut Bolt Locking

LED POWER SUPPLY DRIVER

MODEL
12V/24V
POWER
SUPPLY



IP
20

Power	Input Voltage	12V DC Output	24V DC Output	Dimensions
36W	90-285V AC	12V 3A	24V 1.5A	130x36xH22mm
60W	90-285V AC	12V 5A	24V 2.5A	138x36xH24mm
100W	90-285V AC	12V 8.3A	24V 4.16A	141x50xH25mm
150W	90-285V AC	12V 12.5A	24V 6.25A	181x50xH25mm
200W	90-285V AC	12V 16.7A	24V 8.3A	181x50xH25mm
250W	90-285V AC	-	24V 10.4A	196x60xH30mm
300W	90-285V AC	-	24V 12.5A	196x60xH30mm
400W	90-285V AC	-	24V 16.66A	223x60xH30mm

MODEL
48V
POWER
SUPPLY

IP
20

Power	Input Voltage	48V DC Output	Dimensions
100W	90-285V AC	48V 2.1A	141x50xH25mm
150W	90-285V AC	48V 3.1A	181x50xH25mm
200W	90-285V AC	48V 4.2A	181x50xH25mm



IP
20

MODEL
SLIM
POWER
SUPPLY



Power	Input Voltage	12V DC Output	24V DC Output	Dimensions
48W	90-285V AC	12V 4A	24V 2A	201x19.5xH20mm
100W	90-285V AC	12V 8.3A	24V 4.1A	230x19.5xH22.7mm
200W	90-285V AC	12V 16.7A	24V 8.3A	279x26xH22.7mm

IP
20

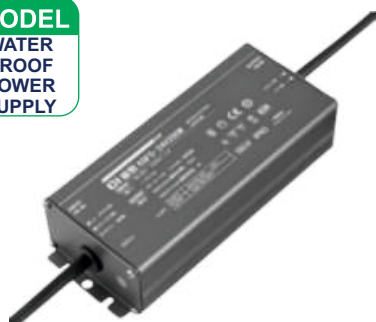
Power	Input Voltage	12V DC Output	24V DC Output	Dimensions
24W	90-285V AC	12V 2A	24V 1A	83x34xH13mm
48W	90-285V AC	12V 4A	24V 2A	93x34xH13mm
100W	90-285V AC	12V 8.3A	24V 4.2A	123x34xH13mm
150W	90-285V AC	12V 12.5A	24V 6.25A	153x34xH13mm
200W	90-285V AC	12V 16.6A	24V 8.3A	153x34xH13mm

MODEL
MATCHBOX
POWER
SUPPLY



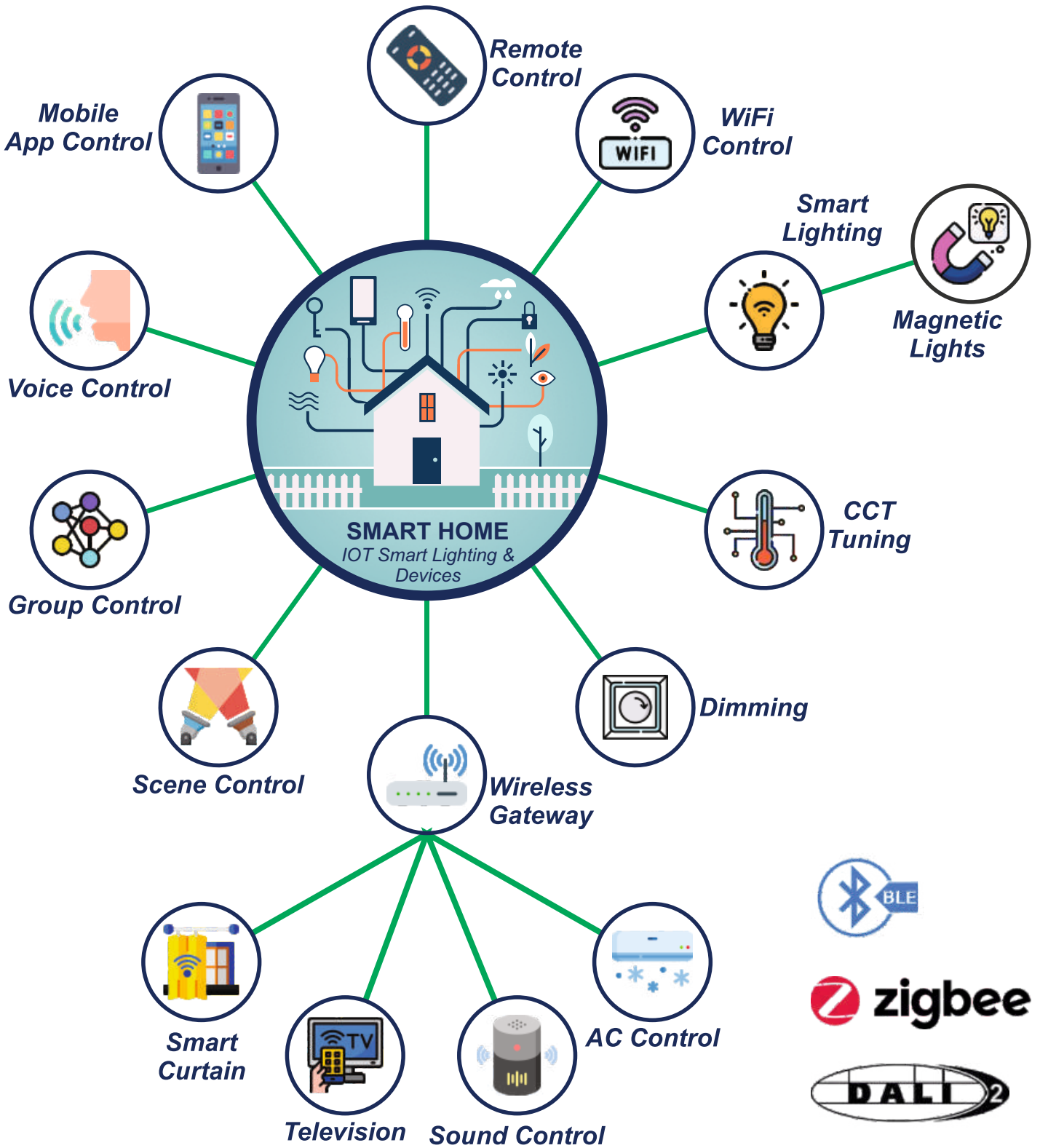
IP
67

MODEL
WATER
PROOF
POWER
SUPPLY



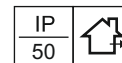
Power	Input Voltage	12V DC Output	24V DC Output	Dimensions
60W	90-285V AC	12V 5A	24V 2.5A	95x66xH40mm
100W	90-285V AC	12V 8.3A	24V 4.2A	160x66xH40mm
150W	90-285V AC	12V 12.5A	24V 6.25A	200x66xH40mm
200W	90-285V AC	12V 16.7A	24V 8.3A	200x66xH40mm
300W	90-285V AC	12V 25A	24V 12.5A	238x66xH40mm

Smart Home Automation *Ecosystem* & Devices



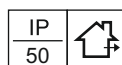
DALI DIMMABLE LED POWER SUPPLY DRIVER

MODEL
24V
DALI DT-6
SMPS



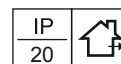
Power	Input Voltage	DC Output	DALI	Power Factor	IP Level
60W	90-285V AC	24V 2.5A 60W	DT 6	0.99	IP 50
100W	90-285V AC	24V 4.2A 100W	DT 6	0.99	IP 50
150W	90-285V AC	24V 6.25A 150W	DT 6	0.99	IP 50
200W	90-285V AC	24V 8.3A 200W	DT 6	0.99	IP 50

MODEL
24V
DALI DT-8
SMPS



Power	Input Voltage	DC Output	DALI	Power Factor	IP Level
60W	90-285V AC	24V 2.5A 60W	DT 8	0.99	IP 50
100W	90-285V AC	24V 4.2A 100W	DT 8	0.99	IP 50
150W	90-285V AC	24V 6.25A 150W	DT 8	0.99	IP 50
200W	90-285V AC	24V 8.3A 200W	DT 8	0.99	IP 50

MODEL
DALI DT-6
C.C LED
DRIVERS

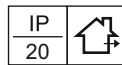


Power	Input Voltage	O/P Voltage	O/P Current	DALI	PF
6-12W	90-285V AC	9-40V	150-300mA	DT 6	0.9
15-20W	90-285V AC	9-40V	350-500mA	DT 6	0.9

DT 6 ROUND NFC

DT 6 MATCHBOX

MODEL
DALI DT-8
C.C LED
DRIVERS



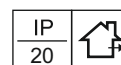
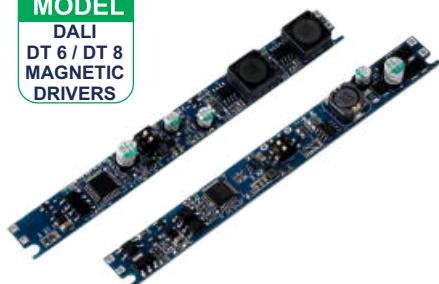
Power	Input Voltage	O/P Voltage	O/P Current	DALI	PF
6-12W	90-285V AC	9-40V	150-300mA	DT 8	0.9
15-20W	90-285V AC	9-40V	350-500mA	DT 8	0.9



DT 8 ROUND NFC

DT 8 MATCHBOX

MODEL
DALI
DT 6 / DT 8
MAGNETIC
DRIVERS

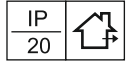


Power	Input Voltage	O/P Voltage	O/P Current	DALI	Size
6-12W	48 VDC	9-40V	150-280mA	DT 6	125x13x10mm
15-20W	48 VDC	9-40V	350-500mA	DT 6	125x13x10mm
6-12W	48 VDC	9-40V	150-280mA	DT 8	125x13x10mm
15-20W	48 VDC	9-40V	350-500mA	DT 8	125x13x10mm

ZigBee Smart Driver Tunable & Dimmable



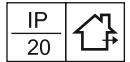
ZigBee Smart Drivers



Power	Type	DC Output	Driver Type
6-12W	SLIM DIP Switch	27-38V 150-280mA	ZigBee Smart
7-12W	Matchbox DIP Switch	27-40V 36V 150-300mA	ZigBee Smart
12W	CCT & Dimmable	27-38V 300mA	ZigBee Smart
15W	CCT & Dimmable	27-38V 350mA	ZigBee Smart
18W	CCT & Dimmable	27-38V 400mA	ZigBee Smart
25W	CCT & Dimmable	27-38V 600mA	ZigBee Smart
36-48W	CCT & Dimmable	27-38V 880-1200mA	ZigBee Smart



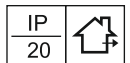
ZigBee Round Drivers



Power	Type	DC Output	Driver Type
6-12W	Round DIP Switch	27-38V 150-280mA	ZigBee Smart
12-18W	Round DIP Switch	27-38V 280-430mA	ZigBee Smart



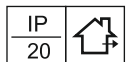
ZigBee Smart CCT Strip Controller



Power	Type	DC Output	Driver Type
120W/240W	CCT & Dimmable	12V 120W/24V 240W 10A	ZigBee Smart
120W/240W	CCT & Dimmable	12V 200W/24V 400W 16A	ZigBee Smart
120W/240W	RGB+CCT	12V 120W/24V 40W 10A	ZigBee Smart



ZigBee Magnetic Driver



Power	Type	DC Output	Driver Type
6-12W	Magnetic Driver	9-40V 150-280mA	ZigBee Smart
15-20W	Magnetic Driver	9-40V 350-500mA	ZigBee Smart



Multimode Zigbee Gateway
Can Connect 50 Zigbee devices
& 70 BLE Devices



Zigbee Remote
Node & Scene



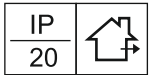
ECO Zigbee Remote
Node & Scene

Bluetooth (BLE+RF 2.4G) Smart Driver Tunable & Dimmable



SLIM

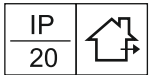
BLE MESH Smart Driver



Power	Type	DC Output	Driver Type
7-12W	Slim DIP Switch	27-38V 150-300mA	BLE + 2.4G RF
15W	Regular	27-38V 400mA	BLE + 2.4G RF
18W	Regular	27-38V 400mA	BLE + 2.4G RF
18W	Regular	50-54V 300mA	BLE + 2.4G RF
18-25W	DIP Switch	27-38v 450-600mA	BLE + 2.4G RF
28-40w	DIP Switch	27-38v 700-1000mA	BLE + 2.4G RF



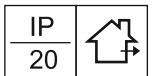
BLE MESH Round Drivers



Power	Type	DC Output	Driver Type
7-12W	Round DIP Switch	27-38V 160-280mA	BLE + 2.4G RF
12-18W	Round DIP Switch	27-38V 280-430mA	BLE + 2.4G RF



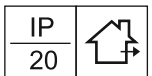
BLE + 2.4G CCT / RGB Strip Controller



Power	Type	DC Output	Driver Type
120W/240w	CCT	12V 120W /24V 240W 10A	BLE + 2.4G RF
120W/240w	RGB+CCT	12V 120W /24V 240W 10A	BLE + 2.4G RF
200W/400w	CCT	12V 200W /24V 400W 16A	BLE + 2.4G RF



BLE MESH Magnetic Driver



Power	Type	DC Output	Driver Type
6-20W	48V Magnetic Contoller	9-40V 150 -500mA	BLE + 2.4G RF



Wireless BLEMesh Gateway



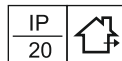
2.4G RF Remote Control



2.4G RF Wireless Feather Touch Scene Switch

SMART DIMMABLE LED POWER SUPPLY DRIVER

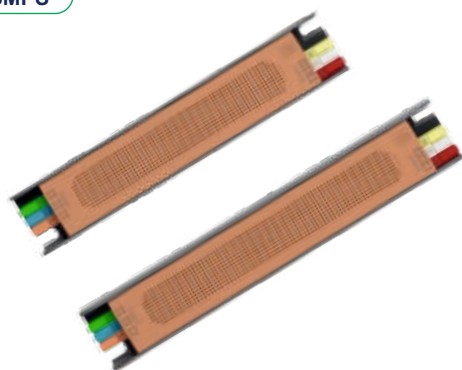
MODEL
DIMMABLE
POWER
SUPPLY



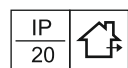
Power	Input Voltage	3in1 Dimmable	24V DC Output	IP Level
48W	90-285V AC	Traic / Analog	24V 2.5A	IP 20
100W	90-285V AC	Traic / Analog	24V 4.1A	IP 20
150W	90-285V AC	Traic / Analog	24V 6.25A	IP 20



MODEL
BLE
SMART
SMPS

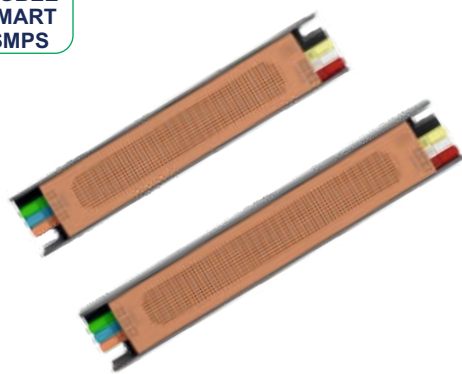


NEW

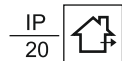


Power	Input Voltage	Protocol	DC Output	Dimension	App
100W	90-285V AC	RF + BLE MESH	24V 4.1A	190x49xH30mm	Tuya
200W	90-285V AC	RF + BLE MESH	24V 8.3A	225x49xH30mm	Tuya

MODEL
ZIGBEE
SMART
SMPS



NEW

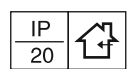


Power	Input Voltage	Protocol	DC Output	Dimension	App
100W	90-285V AC	TUYA ZIGBEE	24V 4.1A	190x49xH30mm	Tuya
200W	90-285V AC	TUYA ZIGBEE	24V 8.3A	225x49xH30mm	Tuya

MODEL
SMART
CURTAIN
CONTROL



Smart Curtain (Motor & Rails)



Power	Fixture size	Body Color	Curtain Movement
40W	2.2mtr / 4.2 mtr	White	Two Way / Single Way

- Remote Operated / App Based Operation / Alexa Voice command Support
- 40Kg Load bearing DC Motor
- Complete set with toggle & Hook

Smart Curtain (Motor & Rails)

SMART SWITCHES, SENSORS & ACCESSORIES

MODEL
BLE
SMART
SWITCHES

3GANG 3SCENE



4GANG 4SCENE



2GANG 2SCENE



Display Screen & Programmable Switch



Switch Type	Input	Size	Load Cap.	Body Color
2Gang 2Scene	AC85-265V	86x86xH70mm	300W	WH/BK/GR
3Gang 3Scene	AC85-265V	86x86xH70mm	300W	WH/BK/GR
4Gang 4Scene	AC85-265V	86x86xH70mm	300W	WH/BK/GR



MODEL
ZIGBEE
SMART
SWITCHES



Switch Type	Input	Size	Load Cap.	Body Color
2Gang 2Scene	AC / Battery	86x86xH70mm	300W	WH/BK/GR
3Gang 3Scene	AC / Battery	86x86xH70mm	300W	WH/BK/GR
4Gang 4Scene	AC / Battery	86x86xH70mm	300W	WH/BK/GR



MODEL
TUYA
SMART
SENSORS



Protocol	Input	Load	Cutout Size	Sensor Type	Range
BLE	AC110-220V	300W	Ø55mm	Human Presence	6mtr, 120°
Zigbee	AC110-220V	300W	Ø55mm	Human Presence	6mtr, 120°



MODEL
TUYA
SMART
SCREEN



4inch



10inch



Console Type	Input	Screen Size	Gateway	Voice Assist
Touch	AC110-265V	4 inch	Zigbee	Alexa
Touch+Buttons	AC110-265V	10 inch	Zigbee	Alexa



MODEL
2.4G RF
TOUCH
PANEL



Touch Switch	Input	Type	Size	Body Color
Tune + 2Scene	Battery	2.4G Wireless	86x86xH12mm	WH/BK

SILICON FLEX PROFILE SERIES

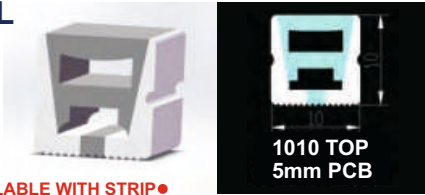
Model: 1010 FL

FRONT LIGHT

Flex Size:
10 x 10mm

Strip Size:
PCB 5mm

●AVAILABLE WITH STRIP●



1010 TOP
5mm PCB

Model: 1212 FL

FRONT LIGHT

Flex Size:
12 x 12 mm

Strip Size:
PCB 8mm

●AVAILABLE WITH STRIP●



1212 TOP
8mm PCB

Model: 1616 FI

FRONT LIGHT

Flex Size:
16 x 16mm

Strip Size:
PCB 8-12mm

●AVAILABLE WITH STRIP●



1616 TOP
8-12mm PCB

Model: 2014 FL

FRONT LIGHT

Flex Size:
20 x 14mm

Strip Size:
PCB 8-12 mm

●AVAILABLE WITH STRIP●



2014 TOP
8-12mm PCB

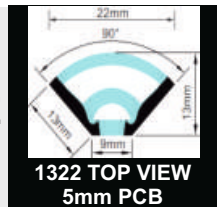
Model: 1322 V

FRONT LIGHT

Flex Size:
13 x 22mm

Strip Size:
PCB 5mm

TWO SIDE
V GROOVE
FLEX



1322 TOP VIEW
5mm PCB

Model: 0410 SL

SIDE LIGHT

Flex Size:
04 x 10mm

Strip Size:
PCB 5mm



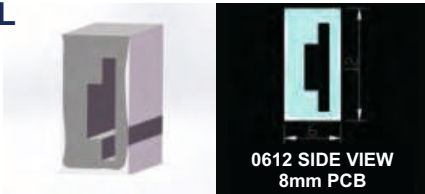
0410 SIDE VIEW
5mm PCB

Model: 0612 SL

SIDE LIGHT

Flex Size:
06 x 12mm

Strip Size:
PCB 8mm



0612 SIDE VIEW
8mm PCB

Model: 1010 3SL

3 SIDE LIGHT

Flex Size:
10 x 10mm

Strip Size:
PCB 5mm



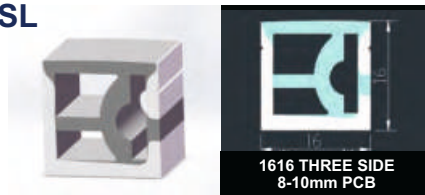
1010 THREE SIDE
5mm PCB

Model: 1616 3SL

3 SIDE LIGHT

Flex Size:
16 x 16mm

Strip Size:
PCB 8-10 mm



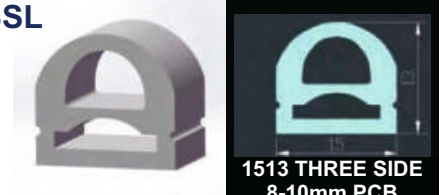
1616 THREE SIDE
8-10mm PCB

Model: 1513 3SL

3 SIDE 270°

Flex Size:
15 x 13mm

Strip Size:
PCB 8-10mm



1513 THREE SIDE
8-10mm PCB

Model: D22 360°

360° LIGHT

Flex Size:
Diameter 22mm

Strip Size:
PCB 5mm



D22mm 360°
5mm PCB

Model: 1010 BLFL

FRONT LIGHT

Flex Size:
10 x 10mm

Strip Size:
PCB 5mm



1010 TOP
5mm PCB

Model: 1616 BLFL

FRONT LIGHT

Flex Size:
16 x 16mm

Strip Size:
PCB 8-12mm



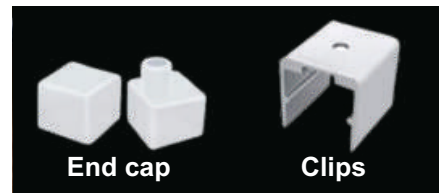
1616 TOP
8-12mm PCB

Accessories

CLIP & COVER

Endcap:
With Hole / Plain

Clip:
Set / String



End cap

Clips

FIRELUX®



E-Catalogue



Whatsapp



Facebook



Instagram



RAINBOW LIGHTING SOLUTIONS

OFFICE: 203-204, 2nd Floor, Ghia Bldg., Above Avishkar International, Princess Street, Lohar Chawl, Marine Lines, Mumbai - 400 002.

WORKS: Gala No. 108/208, Bldg. No. 73, Indian Complex, Gundavli Village, Mankoli Naka, Bhiwandi - 421302.

Mob.: **9769303615 / 8879996770 / 8369556332**

Email: vibgyorlights@gmail.com / fireluxled@gmail.com

Web: www.fireluxled.com

परस्परपारस्परहो जीवानाम्